

ARTIFICIAL NEURAL NETWORK: AS EMERGING DIAGNOSTIC TOOL FOR BREAST CANCER

Ishwinder K. Sandhu¹, M. Nair², H. Shukla³ & S.S. Sandhu^{3*}

¹Department of Computer Science and Engineering, ITM University, Gurgaon, Haryana.

²Center for Scientific Research & Development, Peoples University, Bhopal, M.P.

^{3*} Department of Biological Sciences, R.D.University, Jabalpur, M.P.

*Corresponding Author Email: ssandhu@rediffmail.com

ABSTRACT

In the present scenario, cases of breast cancer disease are on the rise as a result of which it has become one of the most deadly diseases around the world. Classical methods required cytopathologists or oncologists to examine the breast lesions for detection and classification of various stages of the cancer; which was not only labour intensive but inaccurate. Hence an efficient method using artificial neural networks as decision making tool is utilized for the diagnosis of breast cancer. Early detection and diagnosis of breast cancer is necessary for reducing the premature deaths caused by it. But the conventional biological techniques used for breast cancer diagnosis have not proved to be very efficient thereby increasing the mortality rate among cancer patients. These conventional therapies though improve the condition of patient but put them at the stake of enormous side effects. In the recent times, usage of Artificial Neural Networks (ANN) has emerged as a reliable technique for the efficient and quick diagnosis of breast cancer. Several research groups are working world wide on the development of neural networks in medical diagnosis. This review describes neural network approaches to breast cancer diagnosis including different architectures of neural networks.

KEY WORDS

Neural Networks; Artificial Neural Networks; UIMS, diagnosis.

INTRODUCTION

Breast Cancer is one of the most common diseases among women which lead to mortality. It is the most frequently encountered cancer type in women and is the second most terminal one after the lung cancer. It is also seen in men but not much frequently. In India, an average age for developing a breast cancer has undergone a shift. Preoperative or neo-adjuvant chemotherapy is an option with large operable breast cancer so to facilitate breast conservation and to downstage the disease. There has been a number of options for the

prognosis and diagnosis of breast cancer. These markers provide a window of opportunity for the detection of breast cancer. Globally, the five most common cancers considered in both sexes were cancers of the lung (1,824,701; 13%), breast (1,676,633; 11.9%), colorectum (1,360,602; 9.7%), prostate (1,111,689; 7.9%), and cervix uteri (527,624; 3.7%), comprising 46.2% of the 28 cancers reported [1]. There have been various strategies utilized for the early detection of breast cancer so to reduce mortality. Newer diagnosis techniques in imaging, tissue diagnosis and cytobiological assessments have held a great promise for the

early detection and identification of risk of the disease. Newer and more specific screening and diagnostic tests are required for early detection of breast cancer, especially in high-risk groups. Therefore, information technology has developed different computerized methods for easy and quick diagnosis of breast cancer, out of which ANN is the most significant method.

CANCER

Cancer is characterized as an abnormal cell growth with the potential to reach to other body parts. It is divided into 100 types depending upon the type of cell from where it started [2]. Cancer generally accounts for 7.6 million deaths (around 13% of all deaths) in 2008, with an estimated 12 million deaths in 2030 [3]. A normal cell in a human being grows, divides and multiplies in a controlled fashion. Every cell in the human body follows a cell cycle comprising of different phases i.e. G_1 , S, G_2 and M (fig. 1A), where “S” stands for “Synthesis”, during this phase DNA synthesis and chromosome duplication takes place, “M” stands for “Mitosis”, during this phase the cell

divides and forms two daughter cells, " G_1 " and " G_2 " stand for "gap", during these phases there is a regulation of cell cycle progression on the basis of different external and internal signals (checkpoints) [4,5,6]. In order to facilitate smooth transition of cell from one phase to another these checkpoints are necessary thus, to ensure that a cell enters the next phase only when all the tasks which were to be performed in the prior phase have been completed [7].

A cancerous cell disregards these checkpoints (fig. 1B) and continues to grow in an uncontrolled manner. Cancer cells thus have two heritable properties: they and their progeny (1) reproduce in defiance of the normal restraints on cell division and (2) invade and colonize territories normally reserved for other cells. Apart from this a cancer cell also does not undergo programmed cell death or apoptosis. In Cancer cells, the length of the telomere is not shortened over several cell divisions and hence the cells continue to divide and bypass senescence (fig. 2).

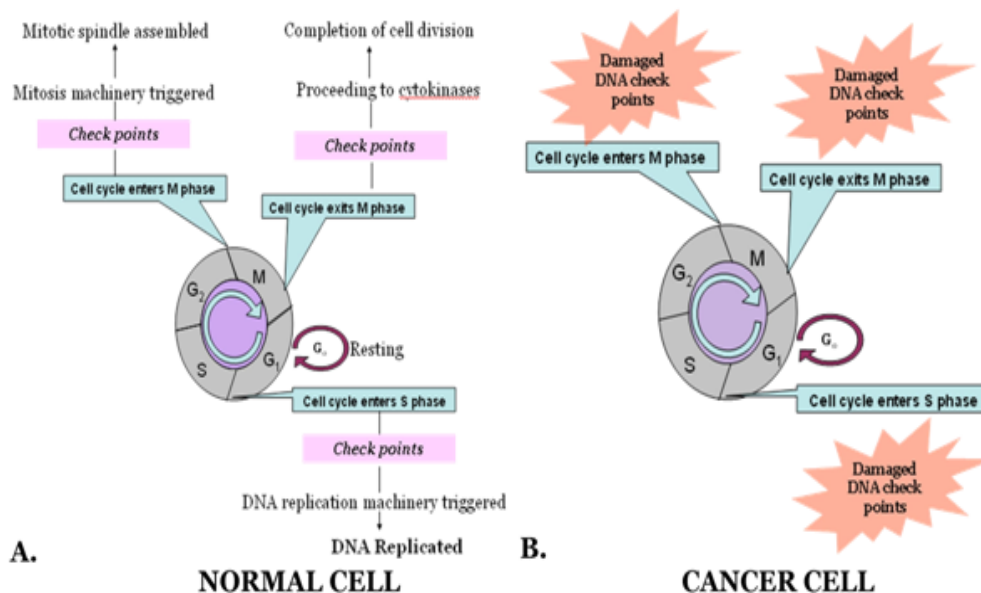


Fig 1 A: Cell Cycle - Cell grows in interphase, which consist of three phases: S phase; G₁ phase; G₂ phase whereas in the M phase the nucleus and the cytoplasm divides.

B: Checkpoints of the cell cycle - Signals from the environment causes the control systems to arrest at specific checkpoints.

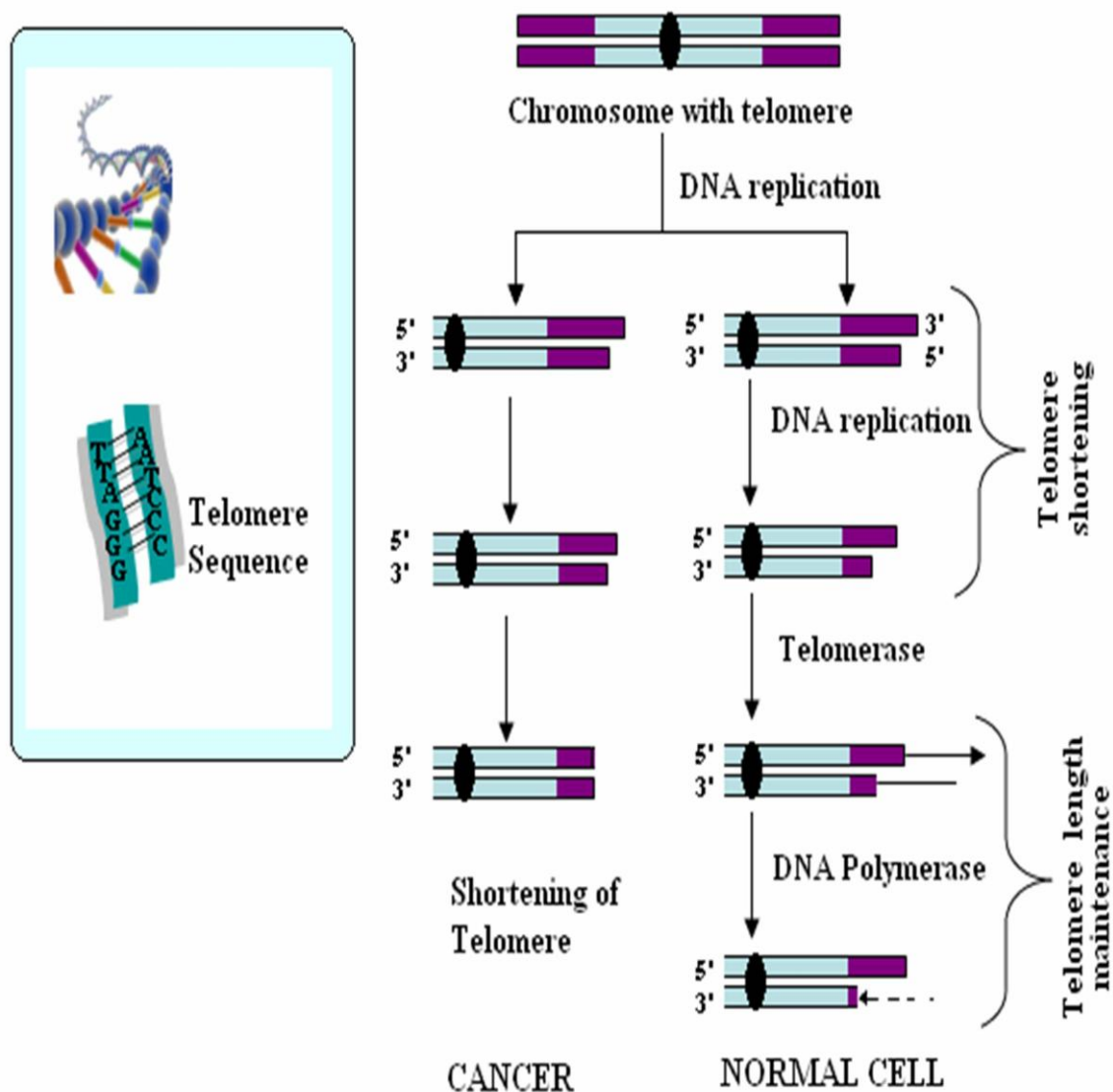


Fig 2: Telomeres and their role in cellular integrity - Telomeres are non-coding repetitive DNA sequences (TTAGGG) that protect the ends of linear eukaryotic chromosomes.

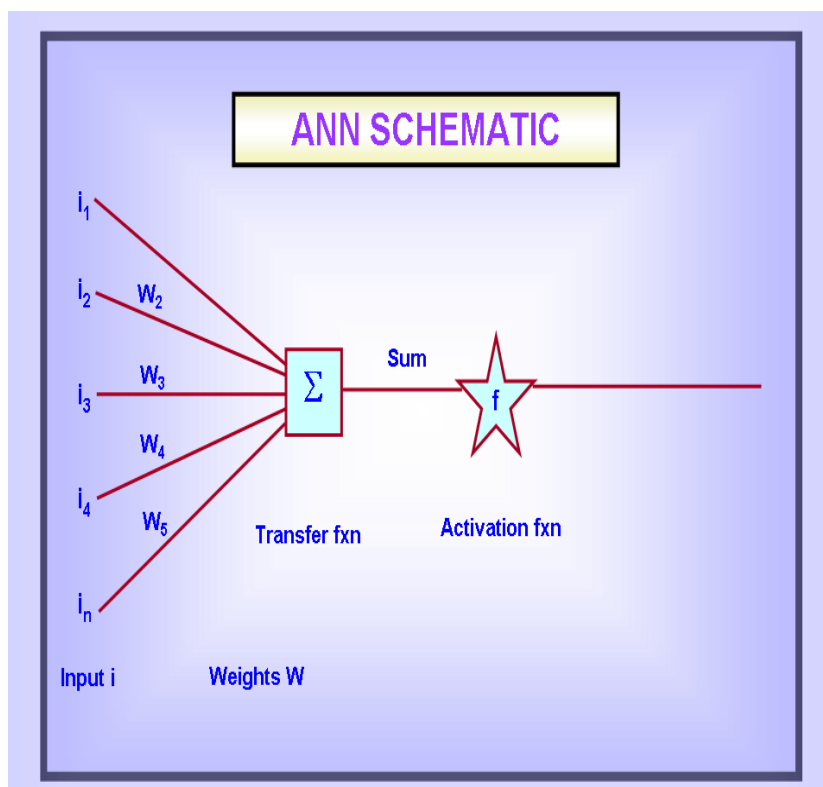


Fig 3: Schematic of ANN

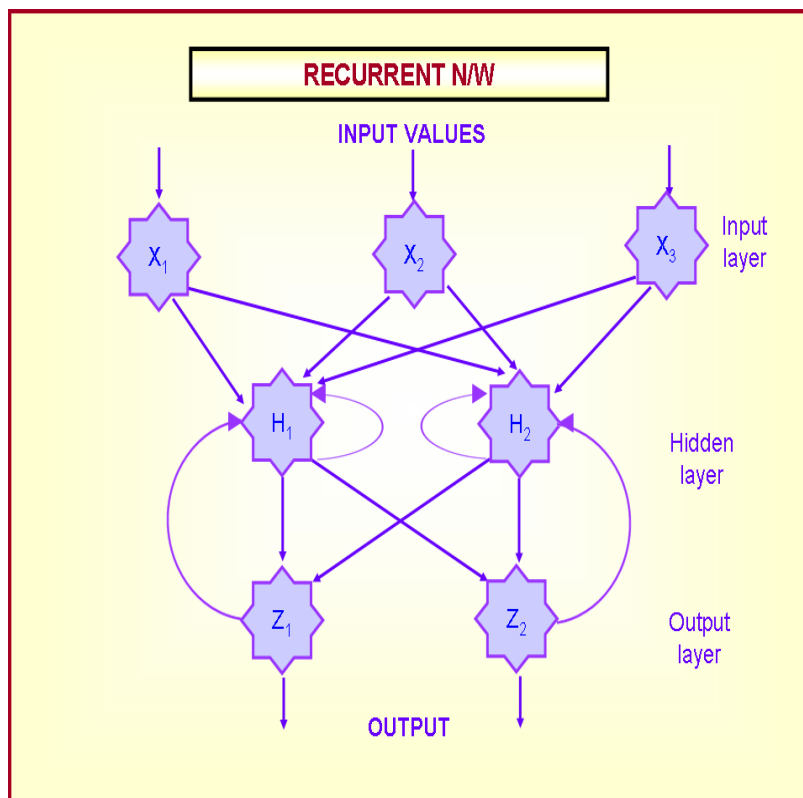


Fig 4: Recurrent Network

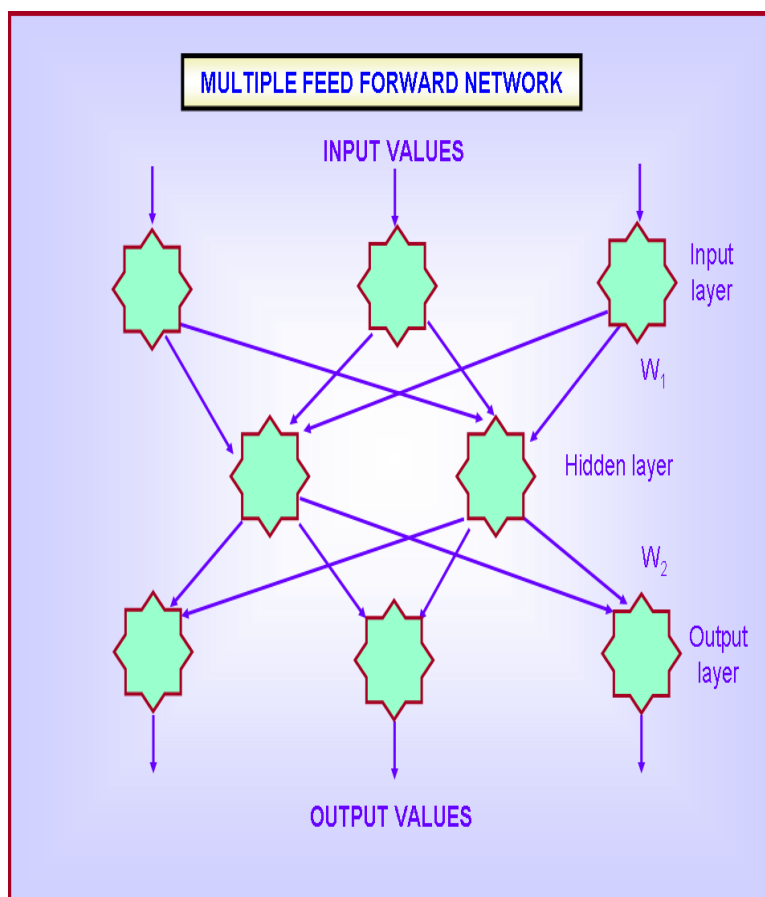


Fig 5: Multilayer Feedforward Network

Breast Cancer

Breast cancer is the most common disease among the women all around the world since last few years [8,9]. In fact, it has become one of the leading causes of death in women [10]. In this disease formation of malignant cells (cancer) takes place in the tissues of the breast. It occurs when a mutation takes place in the cells that line the lobules (lobular carcinoma) or the ducts (ductal carcinoma) that supply milk. The most common type of breast cancer is ductal carcinoma. There are many factors which causes breast cancer these includes certain inherited genes (BRCA1 (Breast cancer 1), BRCA2 (Breast cancer 2), TP53 (tumor suppressor protein p53) and ATM. Variations of the BRCA1, BRCA2, CDH1, STK11, and TP53 genes increase the risk of developing

breast cancer whereas AR, ATM, BARD1, BRIP1, CHEK2, DIRAS3, ERBB2, NBN, PALB2, RAD50, and RAD51 genes are associated with breast cancer. These genes accounts for around 40-50% of all cases of inherited breast cancer. Inherited changes in several other genes, including CDH1, STK11, and TP53, have also been found to increase the risk of developing breast cancer. In addition to these specific genetic changes, researchers have also identified many personal and environmental factors (estrogen, radiation, electromagnetic fields, xenoestrogens and exposure to chemicals) that influence the risk of developing breast cancer. These factors include gender, age, ethnic background, a history of previous breast cancer in closely related family members,

certain changes in breast tissue and hormonal factors [11, 12].

Types of Breast Cancer

There are mainly two types of breast cancer as mentioned below [13]:

In Situ Breast Cancer: This cancer remains within the ducts or lobules of the breasts, where the cancer occurring within the ducts is called as Ductal Carcinoma in situ whereas when the cancer occurs in the lobule of the breast it is called Lobular carcinoma in situ. Lobular carcinoma in situ, are the most common cancer among premenopausal women and cannot be detected via physical examination but also requires mammograms.

Infiltrating Breast Cancer: In this type of breast cancer the cancer cells penetrate and cross the membrane surrounding the milk duct or lobule, and thereby invade the adjacent tissues. Thereby resulting in the formation of a lump which can be easily detected via physical examination. Infiltrating Ductal Carcinoma occurs across the ducts while infiltrating lobular carcinoma occurs across the lobules.

Other types of breast cancer: Besides above two there are other cancers (cystosarcoma phyllodes, inflammatory cancer, breast cancer during pregnancy, paget's disease) which occur comparatively less.

Clinical Stages of Breast Cancer

Cancer is divided into different stages on the basis of three main features viz., its invasive or non-invasive character, the widespread of cancer in lymph nodes and size of the tumor. Staging is used basically to describe the extent of the cancer spread. American Joint Committee on Cancer (AJCC) utilizes the results of physical exam, biopsy and imaging tests (called the *clinical stage*), or the results of surgery

(called the *pathologic stage*) for describing the stages of the breast cancer. Pathologic staging is more accurate than the clinical stage, as it allows the clinicians to have an immediate idea of the extent of the cancer.

On the basis of the TNM staging system [14] cancers are classified according to their T, N, and M stages. Stage T (0 to 4) depicts the size of the tumor and its invasion in skin or wall of the chest, Stage N (0 to 3) describes the number of lymph nodes affected by the spreading of cancer to lymph nodes near the breast and Stage M (0 to 1) indicates the spread to distant organs (bones or lungs).

Stage 0 breast cancer is also called as Ductal carcinoma in situ, a pre-cancer of the breast

Stage I: In this stage, the size of tumor is so small that it does not extend outside the breast (Stage I a), small clusters of cancer cells reside in the axillary lymph nodes, but do not invade distant sites.

Stage II: It comprises of stage IIA and stage IIB. In stage IIA the size of tumor is 2 cm or less and cancer has spread to 1 to 3 axillary lymph nodes, 1 to 3 lymph nodes under the arm or small quantity of cancer are found in internal mammary lymph nodes. In the stage IIB, the cancer spreads to axillary lymph nodes, internal mammary lymph nodes but not to other sites and its size remains between 2 cm to 5 cm.

Stage III: It is also divided into three phases viz., stage IIIA, stage IIIB and stage IIIC. In stage IIIA the tumor size is 5 cm or less spreading upto 4-9 axillary lymph nodes, or enlarges into internal mammary lymph nodes but does not extends to distant sites. On the other hand in stage IIIB, besides spreading into axillary lymph nodes and internal mammary lymph nodes, the tumor also

extends towards to the chest wall causing swelling or an ulcer. In Stage IIIC, cancer stretches from axillary lymph nodes and mammary lymph nodes to lymph nodes above and below the clavicle but still does not spreads to distant sites.

Stage IV: By this stage the cancer may be of any size and may or may not have spread to nearby lymph nodes but it finally invades other organs (bones, lungs, liver, or brain) or lymph nodes far from the breast.

Diagnosis of Breast Cancer

Early diagnosis is important to reduce the deadly impact of breast cancer. If breast cancers are detected when they are very small, the large majority of patients can be cured of their disease. Various medical diagnostic methods have been developed for diagnosis of breast cancer. Mammogram detection is the most commonly used method of them. It is an X-ray of the breast that takes pictures of the fat, fibrous tissues, ducts, lobes, and blood vessels. But in spite of the development of medical diagnostic techniques maximum of the breast cancer cases (about >90%) are diagnosed in advance stages i.e. stage II, III and stage IV [15]. This delay in diagnosis not only increases the cost of treatment but also decreases the chances of survival of the patients. As a result, the problem of Breast Cancer Diagnosis (BCD) has attracted many researchers in the area of computational intelligence, data mining and statistical fields.

Recently, Artificial Neural Networks (ANNs) has emerged as an effective method for pattern recognition, machine learning and data mining. It is inspired from the biological neural network of mammalian brain, capable of complex decision making and pattern recognition. Neural networks are used to increase the accuracy and objectivity of medical diagnosis as

they allow physicians to distinguish benign breast tumors from malignant ones [16]. Therefore, several research groups are working world wide on the development of neural networks in medical diagnosis.

Artificial Neural Networks: A New Diagnostic Approach

Artificial Neural Network (ANN) is an intelligent system which is inspired by the biological nervous systems which utilizes and processes information. The information processing system which largely comprises of highly interconnected processing neurons working in unison is described as the key element of this prototype.

Neural Network (NN), an imitator of BNN (Biological Neural Network), is a highly interconnected neuron system and is processed using parallel distributed processing system. This system therefore acquires the ability to learn and thereby access knowledge and make it available for use [17]. Simplified versions of our central nervous system known as Neural Networks are hence provoked by the functions performed by a human brain. Neural Networks (NN) are just simplified models of human nervous system which performs functions such as logical inference, cognition, pattern recognition, etc [18]. Neurons are hence the structural entities of a human brain. Hence this simplified imitation of neurons is known as to be Artificial Neural Networks (ANN). It is also termed as Artificial Neural System (ANS).

There exists a learning process which configures an ANN for certain applications involving pattern recognition or classification of data. The learning process involves adjustments to the synaptic connections between the neurons. This methodology is explained with the help of a schematic model (fig. 3) showing the behavior of a neuron with each component depicting the

similarities to the actual elements of a biological neuron and provides a basis to Artificial Neural Networks.

Different Neural network architectures like Feed forward Network, Recurrent Network, and Multilayer Feed forward Network are broadly specified in the literature [17]. Feed-forward ANNs are straight forward networks that allow signals to travel one way only. Recurrent network consists of only single feedback loop, such that activation can flow round the loop (fig. 4). Multilayer Feed-forward network consists of several layers irrespective of an input and output layer (fig.5). In medical research, the most commonly used ANN is the multilayer perceptrons which use back propagation training. This back propagation consists of fitting the parameters (weights) of the model by a criterion function, usually squared error or maximum likelihood, using a gradient optimization method. In recent times, staging systems for cancers have evolved for better cancer progression studies.

The TNM system is one of the most widely used cancer staging systems based on the size and/or extent (reach) of the primary tumor (T), the

amount of spread to nearby lymph nodes (N), and the presence of metastasis (M) or secondary tumors formed by the spread of cancer cells to other parts of the body [19]. Therefore, to reduce the computation time of diagnosing the breast cancer with reduced death rate, this computerized breast cancer diagnosis has been developed.

Artificial Neural Network (ANN) models are nowadays utilized for breast cancer prognosis, thereby predicting its prognosis and recurrence so to aid post-operative treatments. As a prediction model these methods have been used in censored survival data. [20, 21, 22, 23, 24].

To assist prognosis, an ANN model learns to predict the time to recur (recurrence time) from previous patients and then predicts outcome for the new patient [25]. An ANN tool reduces the work loads on clinicians by detecting artifact and thereby helps them in decision making. There are various neural network algorithms studied by various researchers to detect and classify the Breast cancer, skin cancer etc. Table 1 provides a preview on the various ANN used for classification, detection and of cancers.

Table 1: Existing Methods of Neural Network Algorithms for Cancer Diagnosis

| S.No. | Algorithms | Utilized in |
|-------|--|---|
| 1. | Back propagation Algorithm | Classification of Breast cancer into malignant or benign with the accuracies of 94.11% and 100% |
| 2. | Multilayer Perceptron Training Algorithm | Classification of mammographic images of breast cancer. Accuracy obtained is 95.49%. |
| 3. | Back propagation Algorithm | Breast cancer detection and classification using ANN. provided an accuracy of 94% |
| 4. | Hierarchical Radial Basis Function | Breast cancer detection using hierarchical RBF with the accuracy of 97.09%. |

Over the hindsight, ANN has also been applied in different survival analysis studies of

circulating tumor cells in metastatic breast cancer patients [26], classification of micro-

calcification in mammograms [27], classification of breast cancer [28], prediction and classification of cancer patients based upon their gene expression profiles [29]. Previous research in this arena has been undertaken by various researchers. Kim *et al.* [30] compared the performance of logistic regression and ANN in differentiation of benign and malignant breast masses. In recent times, Faradmal *et al.* [31] compared log-logistic regression and artificial neural network models in prediction of breast cancer (BC) survival. The study demonstrated the use of ANN method for prediction of survival in field of breast cancer in comparison to LLM model. Bhooshan *et al.* [32] classified breast lesions using computer-aided diagnosis (CADx) of precontrast high spectral and spatial resolution (HiSS) MRI to that of clinical dynamic contrast-enhanced MRI (DCE-MRI). The study utilized Bayesian artificial neural networks and receiver operating characteristic (ROC) analysis which evaluated the performance with leave-one-lesion-out validation.

Subbaiah *et al.* [33] proposed a complete robust back propagation ANN model (using Neurointelligence software) of breast carcinomas diagnosed on fine-needle aspiration cytology (FNAC) based on cytomorphological, morphometric, nuclear densitometric data and gray level co-occurrence matrix (GLCM) of ductal carcinoma and fibroadenomas. Wang *et al.* [34] utilized ANN (STATISTICA®) software to predict the five-year survivability of breast cancer patients who were diagnosed and received radiotherapy treatment. The accuracy rate was found to be 85% with receiver operating characteristic (ROC) curve of 0.79 thereby showing ANN as a good tool to predict the five-year survivability of breast cancer patients.

Mojarad *et al.* [35] corroborated the prognostic significance of a group of well-established prognostic markers (tumour size, oestrogen receptor status (ER), progesterone receptor status (PR), Ki-67 and p53 expression) for breast cancer outcome prediction in terms of nodal status hence obviating the necessity to carry out axillary dissection.

Shi *et al.* [36] validated the use of artificial neural network (ANN) models for predicting quality of life (QOL) after breast cancer surgery and compared the predictive capability of ANNs with that of linear regression (LR) models.

Burke *et al.* [37] employed an ANN composed of three interconnected layers of nodes: an input layer, with each input node corresponding to a patient variable; a hidden layer and an output layer. A transfer function (known as activation function) to send the information to the adjacent layer nodes. ANN discriminates breast cancer and also helps in the risk estimation via discriminating malignant breast lesions from benign ones. In the past, several Artificial Neural Network (ANN) models have been developed for breast cancer risk prediction.

A successful breast cancer diagnosis requires a systematic approach utilizing image analysis, characterization, and integration of clinical and mammographic variables. Thus various new prognostic factors have been identified and novel methods have been introduced using artificial neural network statistical models to discriminate benign and malignant cancers. But irrespective of the novel methods utilized, the accuracy of predicting the probability of breast cancer so to aid decision making is still uncertain. Chuaqui *et al.* [38] describes the measurement of gene-expression profiles using microarray technology which is

increasingly becoming popular among the biomedical research community. High-end computational analysis is also used to identify gene expression patterns, such as clustering, multidimensional scaling, or pattern identification, including neural networks and heuristic algorithms. These data pre-processing and numerical management with a statistical approach accurately identify the differences in the gene expression between sample sets. Likewise, neural networks have been used to examine colon cancer and a range of cancers where the model was found to be 83% accurate at predicting which patients had tumors, based on the blood-plasma lipid profile, and only 8% of patients were identified as false positives [39]. The integrative approach between histological, biochemical and clinical information helps in predicting and estimating the behavior and outcome of the disease.

Khan *et al.* [40] developed a method for classifying cancers in to specific diagnostic categories based on their gene expression signatures using Artificial Neural Networks (ANNs) using small, round blue-cell tumors (SRBCTs) as a model. ANN research mainly aims to provide a filter between the cases and thereby distinguish the cancers hence reducing the cost of medication and helping clinicians in focusing on cancer prone patients. Hence, an Artificial Neural Network (ANN) system is utilized for diagnosis, prognosis and prediction of cancer [41].

In ANN, the networks are firstly structured as per the particular application. To start this process initial weights are randomly chosen where the ANN is trained by exposing it to a set of existing data (based on the follow-up history of cancer patients) and the outcomes is known. Back-propagation algorithm, a learning

technique used in multilayer networks is described as one of the most effective approaches to machine learning algorithm where the information flows from the direction of the input layer towards the output layer [42].

Training in ANN's is achieved *via* examples adjusting the connection weights in ANN's iteratively. The number of iterations of the training algorithm and the convergence time varies depending on the weight initialization. After the repetition of the processes, for a sufficiently large number of training cycles, the network usually converges to a state where the error in the calculations is small thus implying the network to be learned to a certain target function.

CONCLUSION

Over the hindsight, different methods and softwares have been utilized to improve the diagnosis and prognosis of breast cancer. An integrative approach utilizing all the advanced techniques is the best answer to the unanswered questions. In this context, Artificial Neural Networks certainly arose as a valuable tool for the diagnosis of breast cancer as they are automated with intelligent decision making strategy which is not affected from human error factors like emotion, lack of attention or experience. Besides neural networks also provides an inputs in different layered perceptrons without maintaining any software. Thereby, its utilization in diagnosis diminishes the ample time which is required for diagnosis as patients would be checked for cancer quickly and painlessly thereby detecting the disease at an early stage. Thus, ANN is an effective option for cancer diagnosis so to help clinicians and oncologists in the prediction and prognosis of cancer. Hence, neural network will not only assist radiologists by helping in

diagnoses but also it will reduce the economic and mental burden on patients caused due to prolong treatment of breast cancer.

ACKNOWLEDGEMENTS

The authors of this review would like to thank Dr. K. N. Singh Yadav, Vice-Chancellor, R.D. University Jabalpur for his kind support and help. We would also like to thank the Head, Dept. of Biological Sciences, R. D. University, Jabalpur, India for technical and linguistic assistance.

REFERENCES

- Saranath D., Khanna A., Current Status of Cancer Burden: Global and Indian Scenario. *Biomed Res J*, 1(1): 1-5, (2014)
- What Is Cancer? - Medical News Today. Available at: <http://www.medicalnewstoday.com/info/cancer-oncology>. (Accessed on: December 12, 2014).
- World Health Organization. Cancer: Key facts about Cancer. Available at: <http://www.who.int/cancer/about/facts/en/index.html> (Accessed on: December 9, 2014).
- Novak B., Tyson J.J., Modeling the controls of the eukaryotic cell cycle. *Biochem Soc Trans*, 31(6): 1526-9, (2003)
- Johnson D.G., Walker C.L., Cyclins and Cell cycle. *Annu Rev Pharmacol Toxicol*, 295: 312-39, (1999)
- Ozawa K., Sato K., Oh I., Ozaki K., Uchibori R., Obara Y., et al., Cell and gene therapy using mesenchymal stem cells (MSCs). *J Autoimmun*, 30(3): 121-7, (2008)
- Pardee A., A restriction point for control of normal animal cell proliferation. *Proc Natl Acad Sci USA*, 71(4): 1286-90, (1974)
- Kohkar A., Breast Cancer in India: Where do we stand and where do we go? *Asian Pacific Journal of Cancer Prevention*, 13(10): 4861-4866, (2012)
- Weigelt B., Peterse J.L., Van 't Veer L.J., Breast Cancer Metastasis: Markers and Models. *Nature Reviews*, 5: 591-602, (2005)
- Tinoco G., Warsch S., Gluck S., Avancha K., Montero A.J., Treating Breast Cancer in the 21st Century: Emerging Biological Therapies. *Journal of Cancer*, 4: 117-132, (2013)
- Hussein A., Assi Katia E., Khoury, Haifa D., et al., Epidemiology and prognosis of breast cancer in young women. *J Thorac Dis*, 5: S2-S8, (2013)
- Wang X.S., Armstrong M.E., Cairns B.J., Key T.J., Travis R.C. "Shift work and chronic disease: the epidemiological evidence." *Occupational medicine (Oxford, England)*, 61 (2): 78-89, (2011)
- Types of Breast Cancer. Available at: <http://www.cancer.stanford.edu/>. (Accessed on: December 12, 2015).
- BreastCancer.Availableat: <http://www.cancer.org/Cancer/BreastCancer/Detail edGuide/breast-cancer-staging>. (Accessed on: January 12, 2015).
- Meshram I.I., Hiwarkar P.A., Kulkarni P.N., Reproductive risk factors for breast cancer: a case control study. *Online Journal of Health and Allied Sciences*, 8(3): 5, (2009)
- Narang S., Verma H.K., Sachdev U., A review of Breast Cancer detection using Art Model of Neural Networks. *International Journal of Advanced Research in Computer Science and Software Engineering*, 2: 311-318, (2012)
- A brief introduction to Neural Networks. Available at: <http://www.dkriesel.com> (Accessed on January 28, 2015).
- Rajasekaran S, Pai GAV. Neural Networks, Fuzzy Logic, and Genetic Algorithms: Synthesis and Applications. PHI Learning Pvt. Ltd. 2003. Cancer Staging Fact sheet- National Cancer Institute. Available at: <http://www.cancer.gov/cancertopics/factsheet/detection/staging> (Accessed on December 26, 2014).
- Sandhu I.K., Nair M., Aharwal R.P., Sandhu S.S. Diagnosis of Cancer Using Artificial Neural Network and Cloud Computing Approach. *World Journal of Pharmacy and Pharmaceutical Sciences*, 3(6):1533-1548 (2014)
- Xiang A., Lapuerta P., Ryutov A., Buckley J., Azen S., Comparison of the performance of neural network methods and cox regression for censored survival data. *Comput Stat Data An*, 34: 243-57, (2000)
- Jerez J.M., Franco L., Alba E., et al., Improvement of breast cancer relapse prediction in high risk intervals using artificial neural networks. *Breast Cancer Res Tr*, 94: 65-72, (2005)
- Chi C.L., Street W.N., Wolberg W.H., Application of artificial neural network-based survival analysis on two breast cancer datasets. *AMIA Annu Symp Proc*, 130-4 (2007)
- Eleuteri A., Aung M.S., Taktak A.F., Damato B., Lisboa P.J., Continuous and discrete time survival analysis: neural network approaches. *Conf Proc IEEE Eng Med Biol Soc*, 5420-3, (2007)

24. Giordano A., Giuliano M., De Laurentiis M., et al., Artificial neural network analysis of circulating tumor cells in metastatic breast cancer patients. *Breast Cancer Res Treat*, 129: 451-8, (2011)
25. Chih-Lin C., Nick Street W., Wolberg W.H., Application of Artificial Neural Network-Based Survival Analysis on Two Breast Cancer Datasets. *Annual Proceedings/AMIA Symposium, Health Informatics Program, University of Iowa, USA*, (2007)
26. Dheeba J., Selvi S.T., A swarm optimized neural network system for classification of microcalcification in mammograms. *J Med Syst*, 36: 3051-61, (2011)
27. Naghibi S., Teshnehlab M., Shooehdeli M.A., Breast cancer classification based on advanced multi dimensional fuzzy neural network. *J Med Syst*, 36: 2713-20, (2011)
28. Lancashire L.J., Rees R.C., Ball G.R., Identification of gene transcript signatures predictive for estrogen receptor and lymph node status using a stepwise forward selection artificial neural network modelling approach. *Artif Intell Med*, 43: 99-111, (2008)
29. Kim S.M., Han H., Park J.M., Choi Y.J., Yoon H.S., Sohn J.H., et al., A comparison of logistic regression analysis and an artificial neural network using the BI-RADS lexicon for ultrasonography in conjunction with interobserver variability. *J Digit Imaging*, 25(5): 599-606, (2012)
30. Faradmal J., Soltanian A.R., Roshanaei G., Khodabakhshi R., Kasaieian A., Comparison of the performance of log-logistic regression and artificial neural networks for predicting breast cancer relapse. *Asian Pac J Cancer Prev*, 15(14): 5883-8, (2014)
31. Bhooshan N., Giger M., Medved M., Li H., Wood A., Yuan Y., et al., Potential of computer-aided diagnosis of high spectral and spatial resolution (HiSS) MRI in the classification of breast lesions. *J Magn Reson Imaging*, 39(1): 59-67, (2014)
32. Subbaiah R.M., Dey P., Nijhawan R., Artificial neural network in breast lesions from fine-needle aspiration cytology smears. *Diagn Cytopathol*, 42(3): 218-24, (2014)
33. Wang T.N., Cheng C.H., Chiu H.W., Predicting post-treatment survivability of patients with breast cancer using Artificial Neural Network methods. *Conf Proc IEEE Eng Med Biol Soc*, 1290-3, (2013)
34. Mojarad S., Venturini B., Fulgenzi P., Papaleo R., Brisigotti M., Monti F., et al., Prediction of nodal metastasis and prognosis of breast cancer by ANN-based assessment of tumour size and p53, Ki-67 and steroid receptor expression. *Anticancer Res*, 33(9): 3925-33, (2013)
35. Shi H.Y., Tsai J.T., Chen Y.M., Culbertson R., Chang H.T., Hou M.F., Predicting two-year quality of life after breast cancer surgery using artificial neural network and linear regression models. *Breast Cancer Res Treat*, 135(1): 221-9, (2012)
36. Burke H.B., Goodman P.H., Rosen D.B., Henson D.E., Weinstein J.N., Harrell F.E., et al., Artificial neural networks improves the accuracy of cancer survival prediction. *Cancer*, 79: 857-862, (1997)
37. Chuaqui R.F., Bonner R.F., Best C.J., Gillespie J.W., Flaig M.J., Hewitt S.M., et al., Post-analysis follow-up and validation of microarray experiments. *Nat Genet*, 32: 509-14, (2002)
38. Griffin J.L., Shockcor J.P., Metabolic profiles of Cancer cells. 4(7): 551-61, (2004)
39. Khan J., Wei J.S., Ringnér M., Saal L.H., Ladanyi M., Westermann F., et al., Classification and diagnostic prediction of cancers using gene expression profiling and artificial neural networks. *Nat Med*, 7(6): 673-9, (2001)
40. Janghel R.R., Shukla A., Tiwari R., Kala R., Breast cancer diagnosis using Artificial Neural Network models. *Information Sciences and Interaction Sciences (ICIS)*, 89-94, (2010)
41. Rumelhart, D.E., Hinton, G.E., Williams, R.J., in: McClelland, J.L., Rumelhart, D.E. and the PDP Research Group (Eds.), *Parallel Distributed Processing: Explorations in the Microstructure of Cognition*, Foundations, MIT Press, Cambridge 1986, pp. 318-362.



***Corresponding Author:**
ssandhu@rediffmail.com